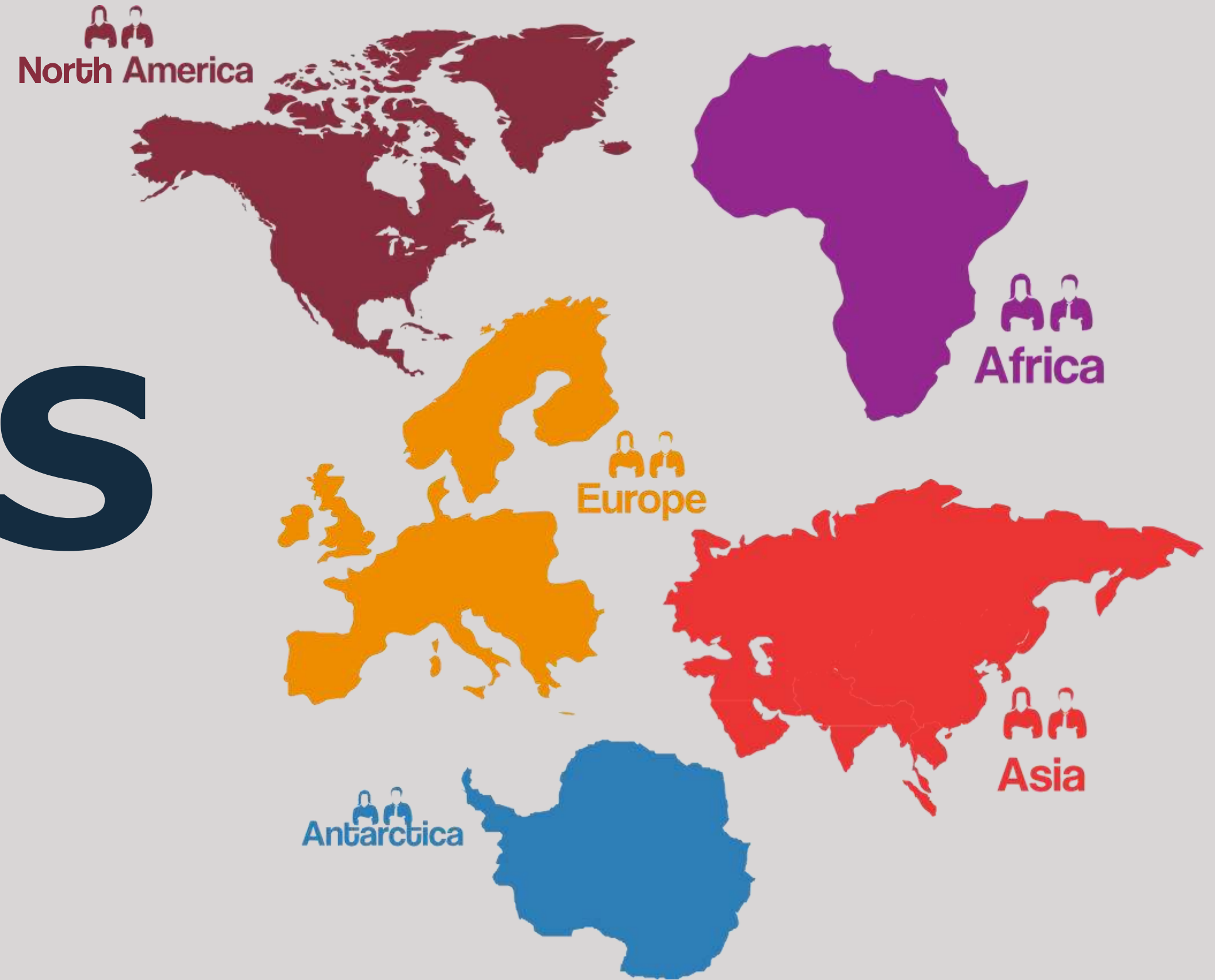


# A levels, a design to global approaches: **building bridges to connect the region worldwide**

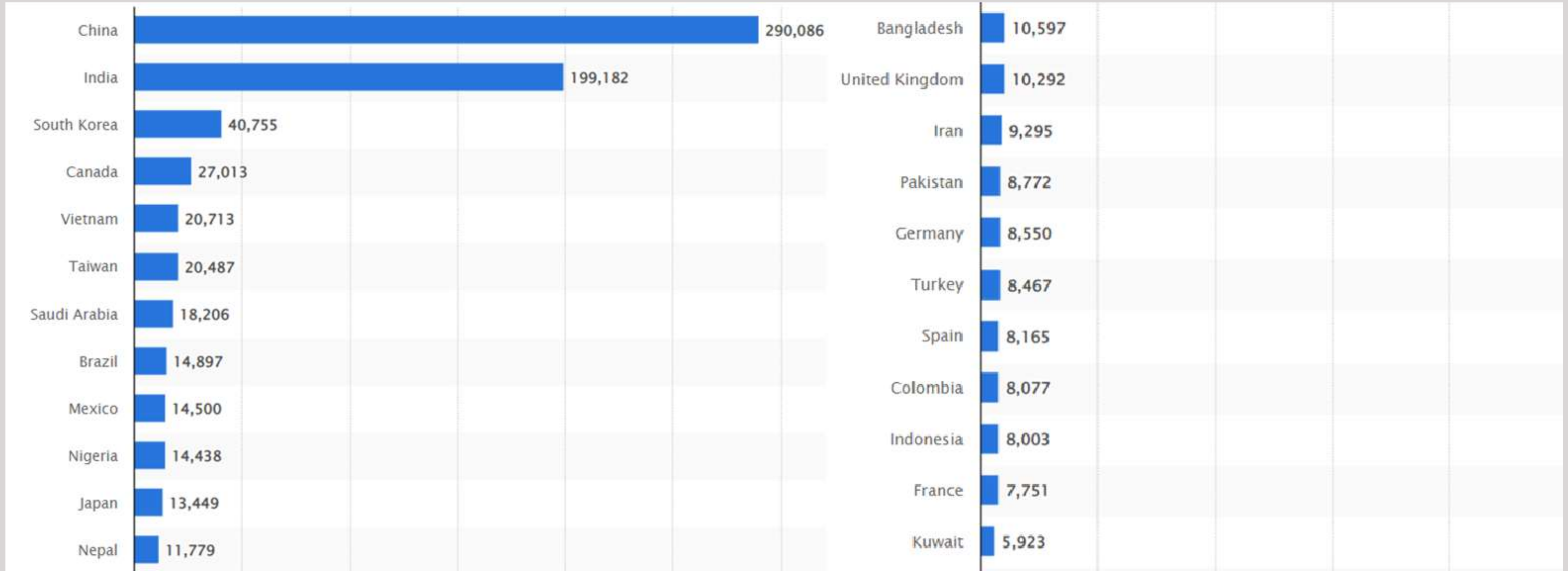




**VS**



# Number of international students studying in the **United States in 2021/22, by country of origin**



# UNITED KINGDOM

## Countries of Origin of International Students in UK

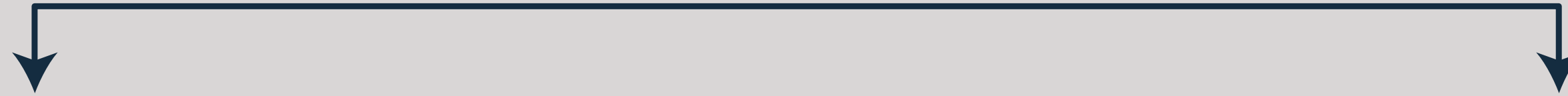


# SPAIN

## Countries of Origin of International Students in Spain



# Global Baccalaureate Model



**Design  
by Ministries**

Ministry of  
Education

**Internationally  
Standardized**



Cambridge  
International  
**A Level**



 **Ontario**  
Ontario Secondary School Diploma

# When should the global citizenship skills standards be met?

**During school life**

**or**

**University**



**VS**



# Why baccalaureate programs are not supportive for global citizenship skills building?



Cambridge  
International  
**A Level**

Ministry of  
Education

 **Ontario**  
Ontario Secondary School Diploma



Which model is the best and why?

# 21st century student perspective



Cambridge  
International  
**A Level**

Ministry of  
Education

 **Ontario**  
Ontario Secondary School Diploma

# GAAP according to career counseling

# G

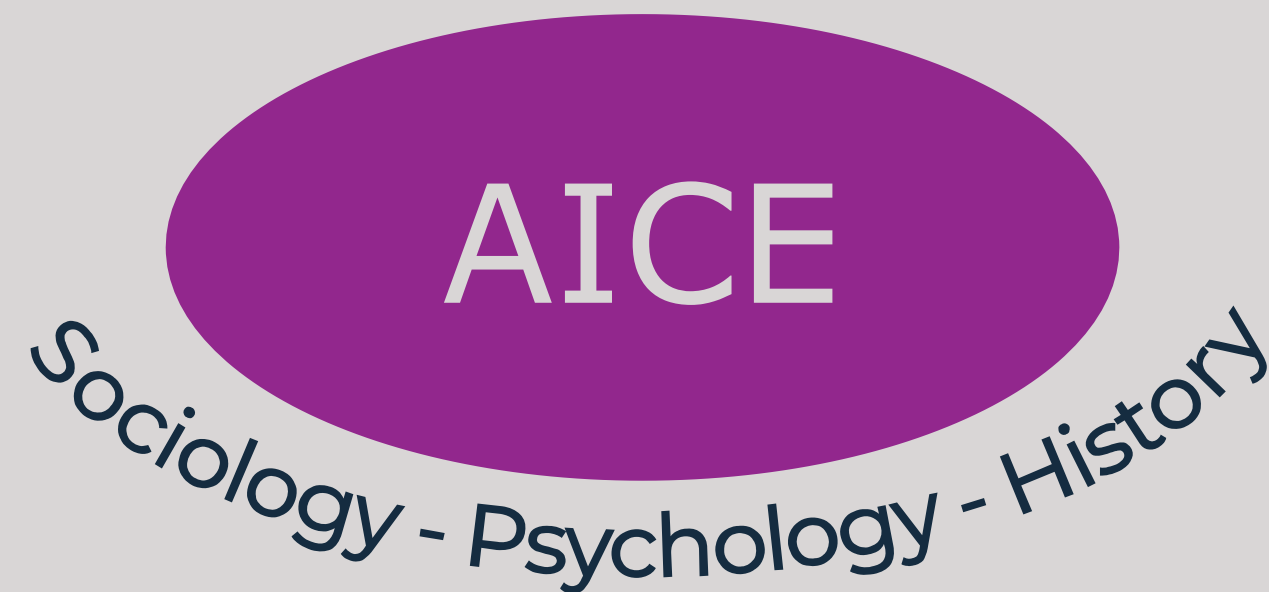
**GLOBAL**  
subject  
research

# A

# A

# P

**PERSPECTIVES**  
subject  
research



# GAAP model according to future student centered ideology

# G

**GLOBAL**

\*Student

# A

**APPROACH**

\*Entrepreneurship skills  
\*Career counseling  
\*UNI admission

# A

**CUSTOMISED**

\*For cross curricular  
\*Integrated solution

# P

**PERSPECTIVES**

\*Research  
\*Experiential learning  
\*Global solutions sharing



# Experiential Education



# GAAP model according to future research based school

# G

**GLOBAL**

\*Global society

# A

**A LEVELS**

\*A model  
\*A design  
\*A resource

# A

**AICE**

Solution for:  
\*Research  
\*University  
\*Career  
\*Entrepreneurship

# P

**PERSPECTIVES**

\*Research outcome  
\*Perspectives Based Research



# A strategy to build globally engaged school design

# FO

Fostering

# C

Connectivity **for** Universal

# U

# S

Student

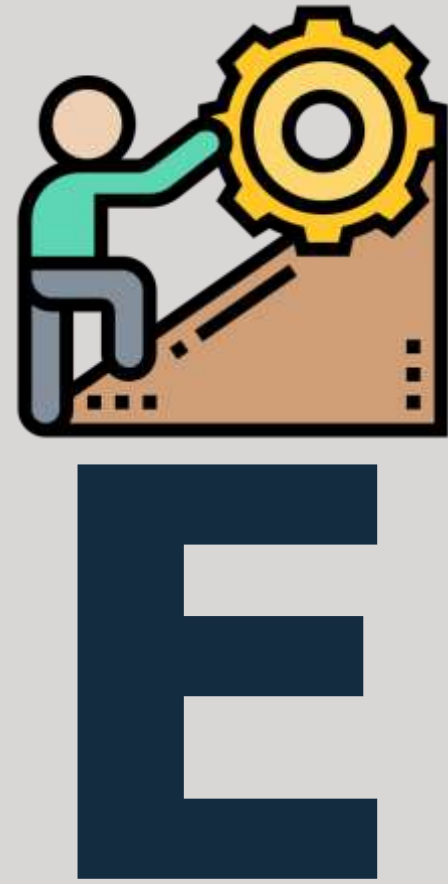
***Global Connectivity***  
***"The student is***  
***universal"***



An essential strategy to build broadminded culture  
for all stakeholders



Vision



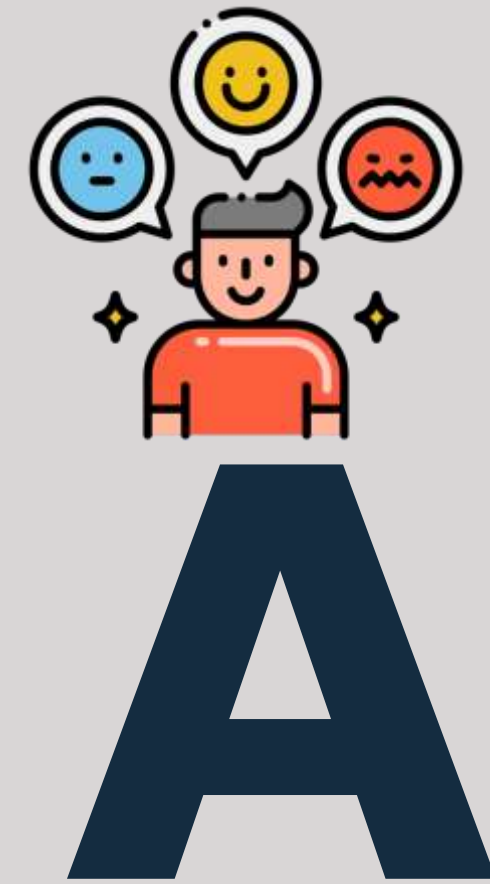
Effort



System



Practice



Attitude

Model A

to



***VESPA***

***FOCUS***

***GAAP***



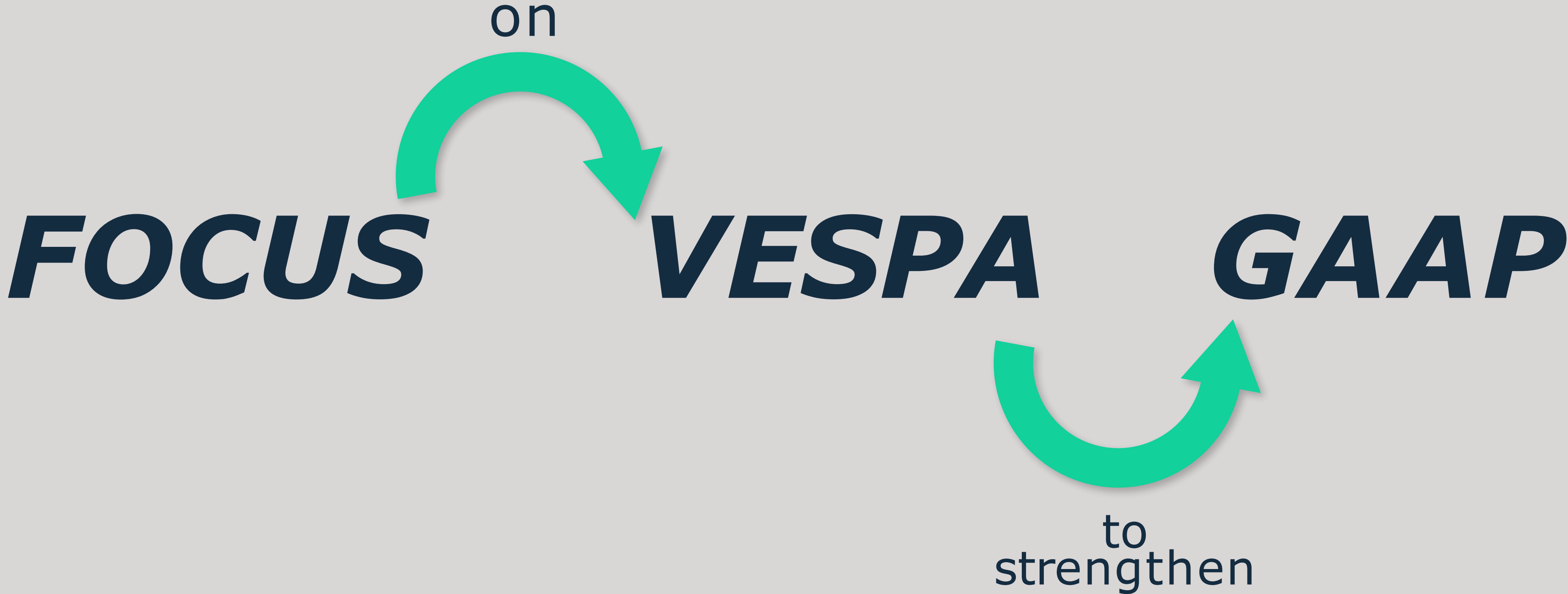
to  
have

build





Model B





***Thanks***